

ELLE

THE
STYLE
MAGAZINE
FOR YOUR
HOME

MARCH 2017
£4.50

DECORATION

SMALL SPACES BIG IDEAS



CLEVER TRICKS FOR COMPACT LIVING
HINT: IT'S ALL ABOUT STORAGE!

BEDROOM TRENDS
14 pages of decorating inspiration
Colours to linens, headboards to lighting



*Vincent Van Duysen:
the designer to watch*

WOODEN FLOORS
How to fit them and
the finishes to choose

WELLBEING
Combat noise pollution:
rediscover the power of quiet

SASH WINDOWS
All the design details
you need to know

SMALL SPACES #8

RED ALERT

A superbly glossy ruby-red mahogany floor and luxurious brass details make a big impact in this unique Parisian pied-à-terre

Words TRISH LORENZ
Photography O AMSELLEM/
PHOTOFOYER



This pillar, which conceals wiring, has been clad in reflective brass, helping to bounce light around the apartment

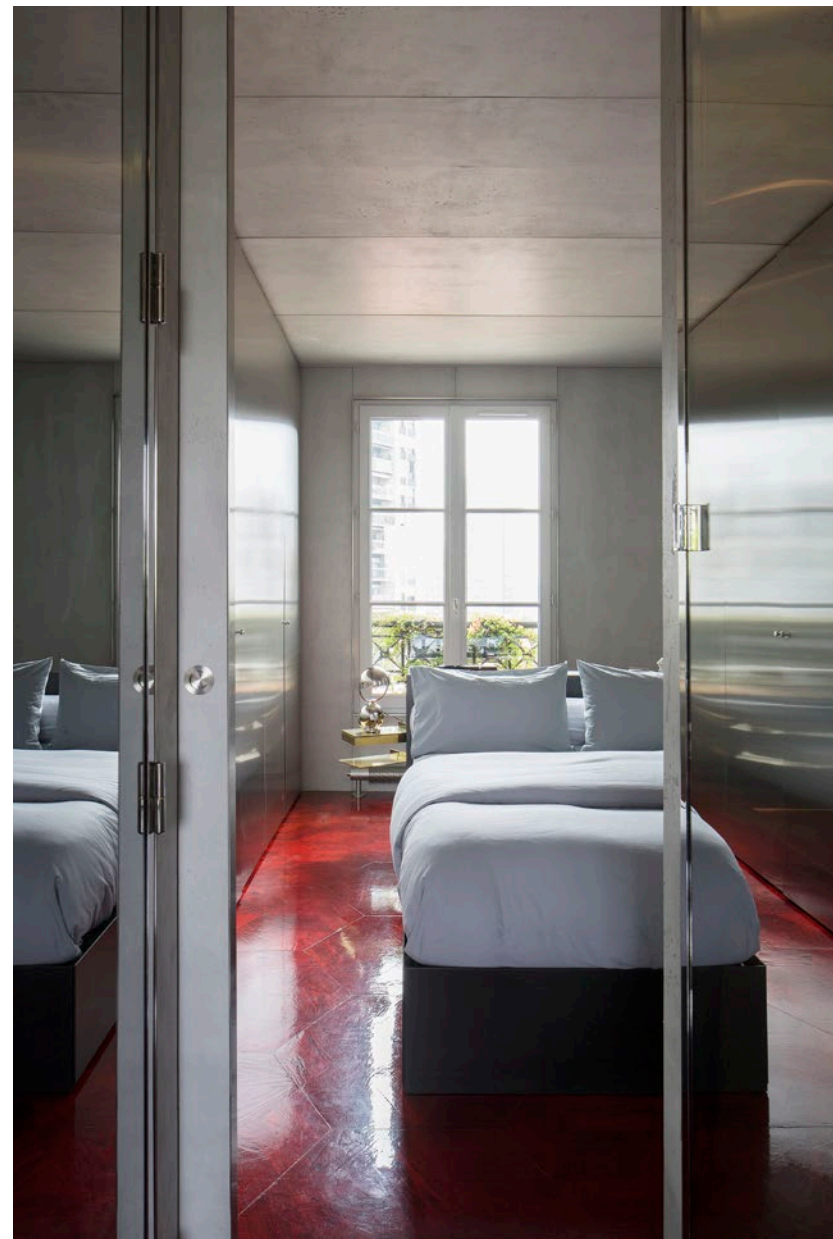
The green marble and brass table, designed by architect Rodolphe Parente, was inspired by the ring worn by the dwarf in *Twin Peaks*. The armchairs are 1960s designs by Gae Aulenti for Prisunic (try Ist Dibs). The floor light is also a vintage piece, by Andrée Putman
Stockist details on p185

This apartment in the Rive Gauche, south Paris, measures only 35 square metres, but it makes up in individuality what it lacks in size. Architect Rodolphe Parente designed the interior for a 38-year-old practicing Buddhist, who lives alone, and the inspiration behind it is as idiosyncratic as the space itself. 'I was asked to create a place evocative of the dancing dwarf's red room in the TV series *Twin Peaks*,' he says. 'The owner is a huge fan of David Lynch and wanted an emotional and vibrant interior.' Situated on the sixth floor of a traditional building, the apartment is a spectacle of red floors, concrete walls and glimmering brass that replaces the original period mouldings, parquet and brick. 'Before the renovation, this space was a very typical Parisian flat, and we completely changed the atmosphere,' says Rodolphe. The apartment is separated into two distinct areas – the first comprises the kitchen and living room, and the second, the bedroom. A small bathroom divides the two, acting as a visual demarcation between private and public spaces. The unusual mix of materials were key to the success of this Parente's design. The shiny, wet-look red mahogany floor, designed in collaboration with French wood flooring expert Oscar Ono, ►

'WE APPLIED TWO COATS OF COLOUR TO THE WOOD TO CREATE THE INTENSE RED SHADE, THEN ADDED A SHINY RESIN LAYER FOR A SUPER-GLOSSY EFFECT – I WANTED A WET-LOOK FLOOR'



Built into the wall to maximise floor space, the floating concrete bookcase weighs over one tonne



The en suite shower is clad in stainless steel, and the area that divides the bedroom from the main living room is framed by large mirrors to enhance the sense of space

runs throughout the space and is offset by the stainless-steel bathroom and brass furniture. The apartment also makes extensive use of concrete – as a finishing coat over the walls and ceiling, and also for the bookshelves and the doors of the kitchen units. The rawness of the material provides a vivid contrast to the metal accents and polished floor. ‘I like to mix traditional and modest materials with precious details, and to combine glossy and matt or patterned and minimal finishes,’ says Rodolphe.

The homeowner’s requirement for a large bookcase – difficult to accommodate in such a small space – was achieved by installing a floating concrete shelving unit that is part architectural statement, part sculpture. Building the shelving was a technical challenge as the empty bookshelves alone weigh more than a tonne – they are supported by an invisible structure built into the wall. This feature is not the only functional element in this home that makes an unexpected statement. The boxed-out pillar in the kitchen, which conceals electrical wires, has been clad in brass, turning a necessity into a focal point. It’s now one of the first things you notice when you step inside. ‘I designed it to catch the light – it’s like a little ray of sunshine,’ says Rodolphe. rodolpheparente.com

‘I WAS ASKED TO CREATE A PLACE EVOCATIVE OF THE DANCING DWARF’S RED ROOM IN THE TV SERIES TWIN PEAKS. THE OWNER IS A HUGE FAN OF DAVID LYNCH’

SMALL SPACE IDEAS

Architect Rodolphe Parente’s top tips

Bring creativity to your home, no matter what its size – don’t think about the proportions of the space, but about the movie you want to make!

Include hidden details that only you know about. Lining a drawer with an opulent fabric is one way to up the luxe factor in a small space.

Use mirrors to make the smallest home feel large and, if used well, infinite.

Transform functional elements by making them part of the overall décor.

Integrate beauty into daily life; in this apartment we’ve concealed utilities in a shining brass box.